

A three-story yellow brick house with a garden. The house has a gabled roof with skylights, black downpipes, and white-framed windows. A black metal fence surrounds the garden, which features a lawn, a gravel path, and various plants. A 'HUNT' logo is overlaid in the top right corner.

HUNT

Claybury Hall | Repton Park | Woodford Green | IG8

Asking Price £1,300,000



HUNT





A Rare Opportunity to Own One of Repton Park's Finest Residences  
Set within the magnificent historic Claybury Hall, this exceptional 2,354 sq ft four-bedroom duplex residence offers an extraordinary blend of period grandeur, contemporary luxury and breathtaking natural surroundings.

A true highlight of this remarkable home is its exceptional private outdoor space, with two terraces accessed directly from the lower bedrooms leading down to a substantial entertaining terrace. Beyond lies the beautifully maintained rose gardens of Claybury Hall and one of the most spectacular views across the London skyline, a truly magical setting to enjoy throughout the seasons.

Situated within the prestigious gated Repton Park development, surrounded by 145 acres of mature parkland, residents benefit from 24-hour security, concierge services and the opportunity to join the exclusive adults-only Virgin Active Health Club housed within the stunning Grade II listed former chapel.

Offering a unique combination of space, privacy, heritage and lifestyle, this is an exceptional opportunity to acquire one of Woodford Green's most desirable homes.

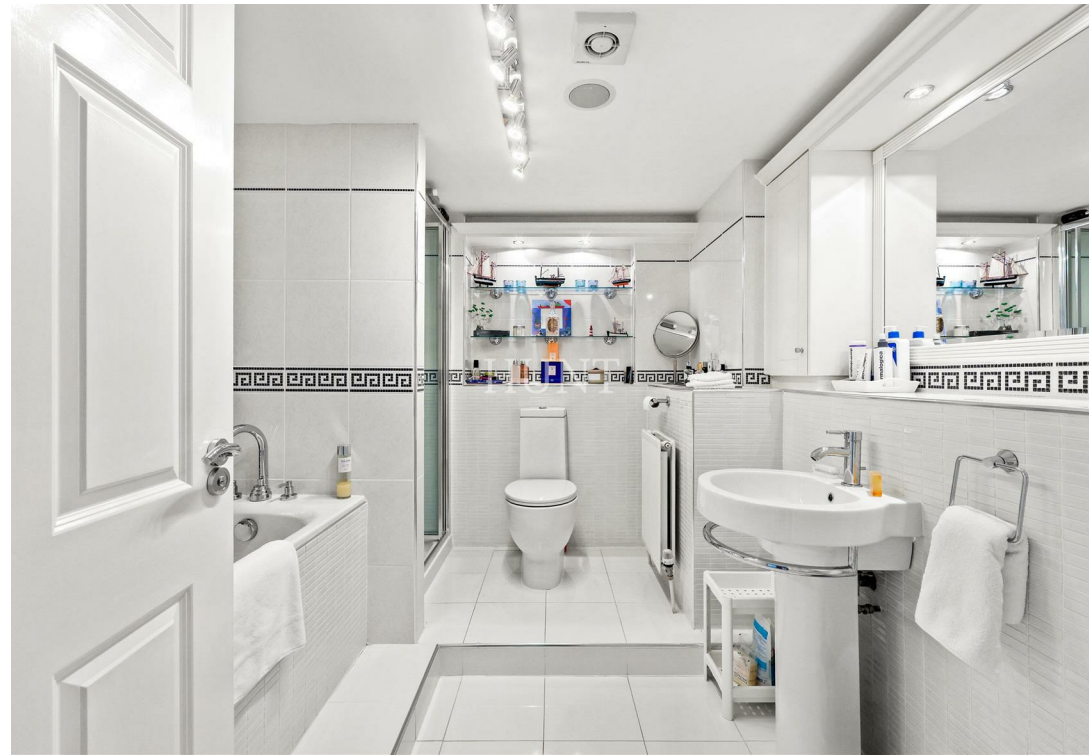


HUNT

REPTON  
PARK

REPTON  
PARK





- Magnificent 2,354 sq ft duplex residence within historic Claybury Hall
- Four generous bedrooms and spacious, versatile accommodation
  - Grand reception room ideal for entertaining
- Two private terraces accessed directly from the lower bedrooms
- Additional substantial private terrace perfect for al fresco dining
- Direct access to the beautifully maintained communal gardens and rose gardens
  - Spectacular far-reaching views across the London skyline
- Prestigious gated Repton Park development set within 145 acres of parkland
  - £9400 pa Service charge £200 pa Ground Rent
  - Garage and two private parking spaces. Sole Agent







**HUNT**  


732 Chigwell Road, Woodford Green, Essex, IG8 8AL

 020 85027667  [info@huntpropertyservices.co.uk](mailto:info@huntpropertyservices.co.uk)  [www.huntpropertyservices.co.uk](http://www.huntpropertyservices.co.uk)



PROPERTY MISDESCRIPTIONS ACT 1991: The Agents has not tested any apparatus, equipment, fixtures and fittings, or services, so cannot verify that they are in working order or fit for the purpose. The buyer is advised to obtain verification from his or her Professional Buyer. References to the Tenure of the property are based on information supplied by the Vendor. The agents have not had sight of the title documents. The buyer is advised to obtain verification from their Solicitor. You are advised to check the availability of any property before travelling any distance to view.